

Demonstration School

Headline Summary Report

2019-20 - Aut2 - Yr11

19/08/2020

Headline Measures

2019-20 - Aut2 - Yr11

	19-20 Aut2
Cohort	223
Average entries	9.76
Average entries GCSE only	9.50

Attainment 8	45.67
Progress 8 entries	203 (91.0%)

P8 Indicator	0.27
P8 Indicator confidence lower	0.13
P8 Indicator confidence higher	0.42
P8 Indicator Maths	0.42
P8 Indicator English	0.73
P8 Indicator Ebacc	0.07
P8 Indicator Other	0.07

	9-5/9-4
English	65.92 (147) / 83.41 (186)
Maths	52.47 (117) / 69.51 (155)
English and Maths	48.43 (108) / 65.92 (147)

3 Sciences	17.94 (40)
More than 1 language	0.90 (2)
Science (x2)	39.01 (87)
Language	19.28 (43)
Humanities	32.74 (73)
EBacc Entries	62.78 (140)
EBacc APS	3.99
EBacc	9.42 (21)
EBacc (9-4 Eng & Mat)	10.31 (23)
5 GCSEs (9-5)	43.50 (97)
5 GCSEs (9-5) inc Eng & maths	39.46 (88)
5 GCSEs (9-4)	62.78 (140)
5 GCSEs (9 to 4) inc Eng & maths	60.99 (136)

At least 1 Pass 9-1	98.65 (220)
5 Passes 9-1	97.76 (218)

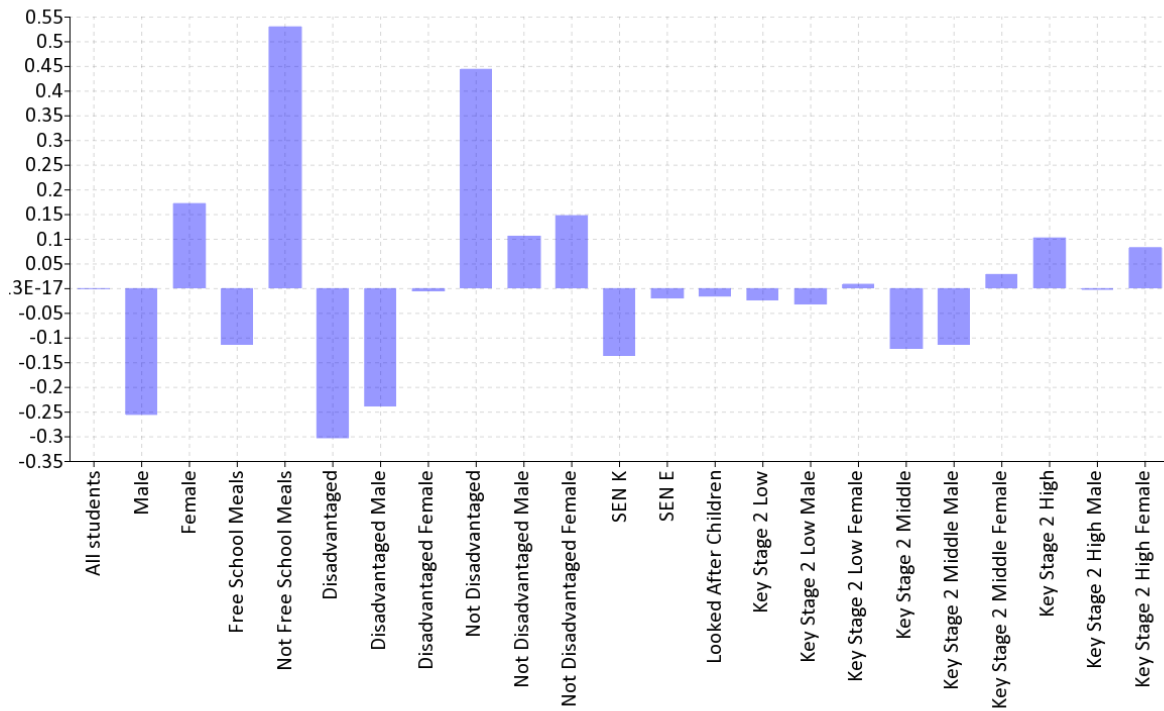
Student numbers in brackets

Attainment 8 & P8 Indicator

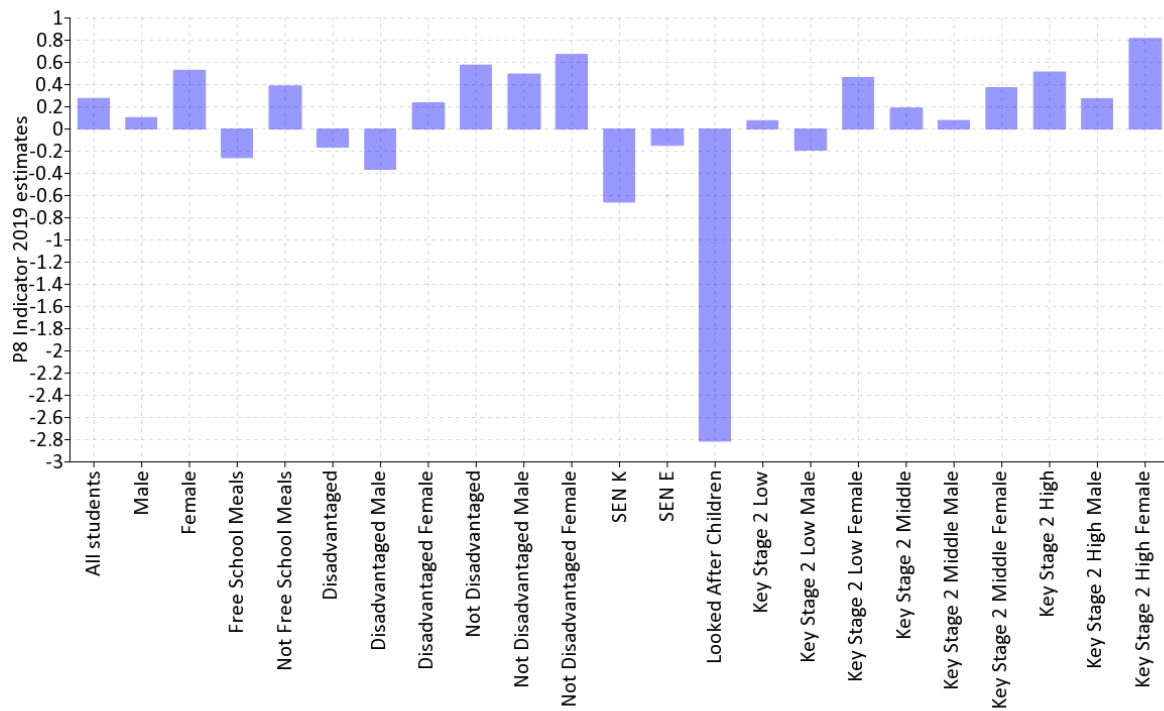
2019-20 - Aut2 - Yr11

	Cohort	Attainment 8	P8 Indicator 2019 estimates	P8 Indicator if group excluded	Impact of group
All students	223	45.67 (223)	0.27 (203)	---	---
Male	133	43.96 (133)	0.10 (121)	0.53	-0.25 (82)
Female	90	48.18 (90)	0.53 (82)	0.10	0.17 (121)
Free School Meals	36	34.56 (36)	-0.26 (36)	0.39	-0.11 (167)
Not Free School Meals	187	47.80 (187)	0.39 (167)	-0.26	0.53 (36)
Disadvantaged	83	38.66 (83)	-0.17 (82)	0.58	-0.30 (121)
Disadvantaged Male	56	37.15 (56)	-0.37 (55)	0.51	-0.24 (148)
Disadvantaged Female	27	41.78 (27)	0.24 (27)	0.28	-0.01 (176)
Not Disadvantaged	140	49.82 (140)	0.58 (121)	-0.17	0.44 (82)
Not Disadvantaged Male	77	48.92 (77)	0.49 (66)	0.17	0.11 (137)
Not Disadvantaged Female	63	50.93 (63)	0.67 (55)	0.13	0.15 (148)
SEN K	27	33.81 (27)	-0.66 (26)	0.41	-0.14 (177)
SEN E	9	25.89 (9)	-0.15 (9)	0.29	-0.02 (194)
Looked After Children	2	21.00 (2)	-2.81 (1)	0.29	-0.02 (202)
Key Stage 2 Low	22	25.23 (22)	0.07 (22)	0.30	-0.02 (181)
Key Stage 2 Low Male	13	23.46 (13)	-0.20 (13)	0.31	-0.03 (190)
Key Stage 2 Low Female	9	27.78 (9)	0.46 (9)	0.27	0.01 (194)
Key Stage 2 Middle	120	41.42 (120)	0.19 (120)	0.40	-0.12 (83)
Key Stage 2 Middle Male	74	40.80 (74)	0.08 (74)	0.39	-0.11 (129)
Key Stage 2 Middle Female	46	42.42 (46)	0.37 (46)	0.25	0.03 (157)
Key Stage 2 High	61	62.10 (61)	0.51 (61)	0.17	0.10 (142)
Key Stage 2 High Male	34	60.06 (34)	0.27 (34)	0.27	-0.00 (169)
Key Stage 2 High Female	27	64.67 (27)	0.82 (27)	0.19	0.08 (176)

Group Impact on Progress 8



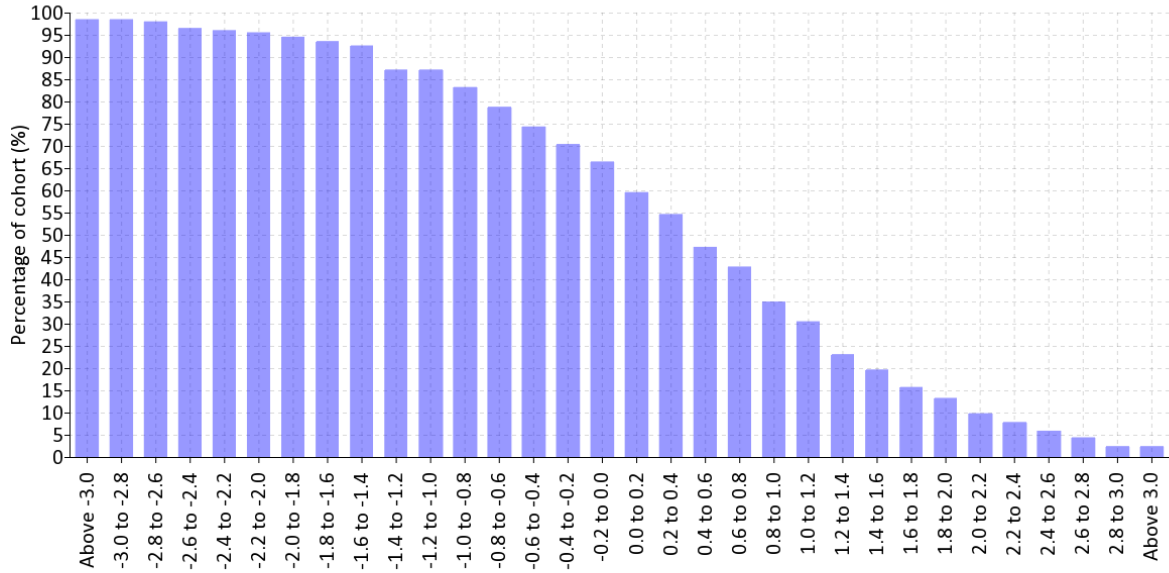
Progress 8



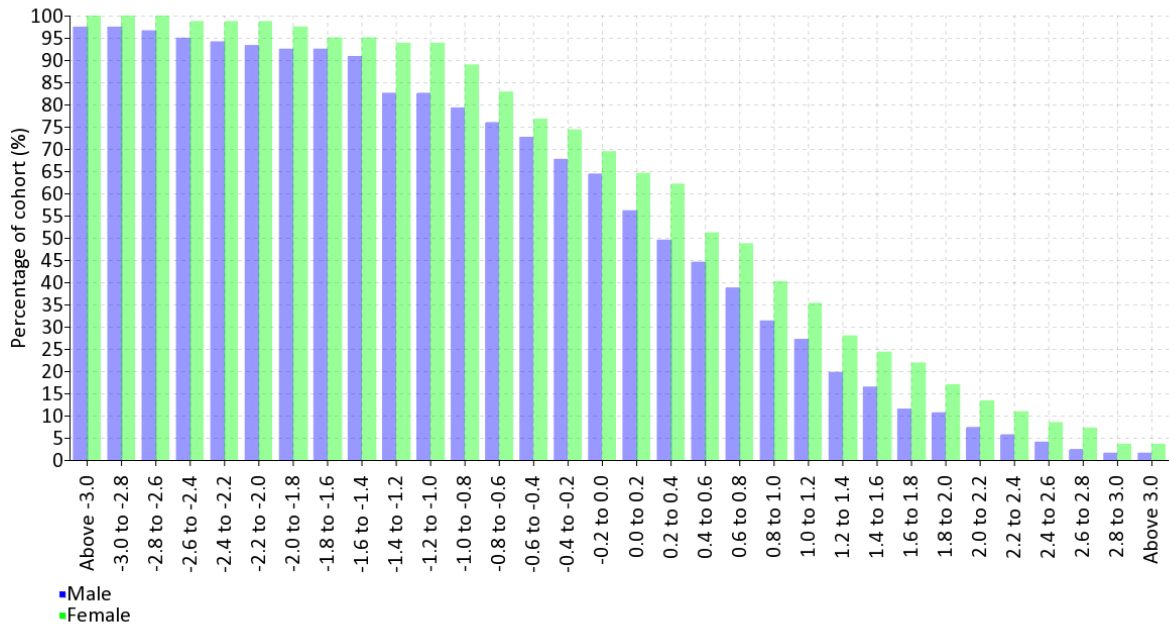
P8 Indicator Distribution

2019-20 - Aut2 - Yr11

All students



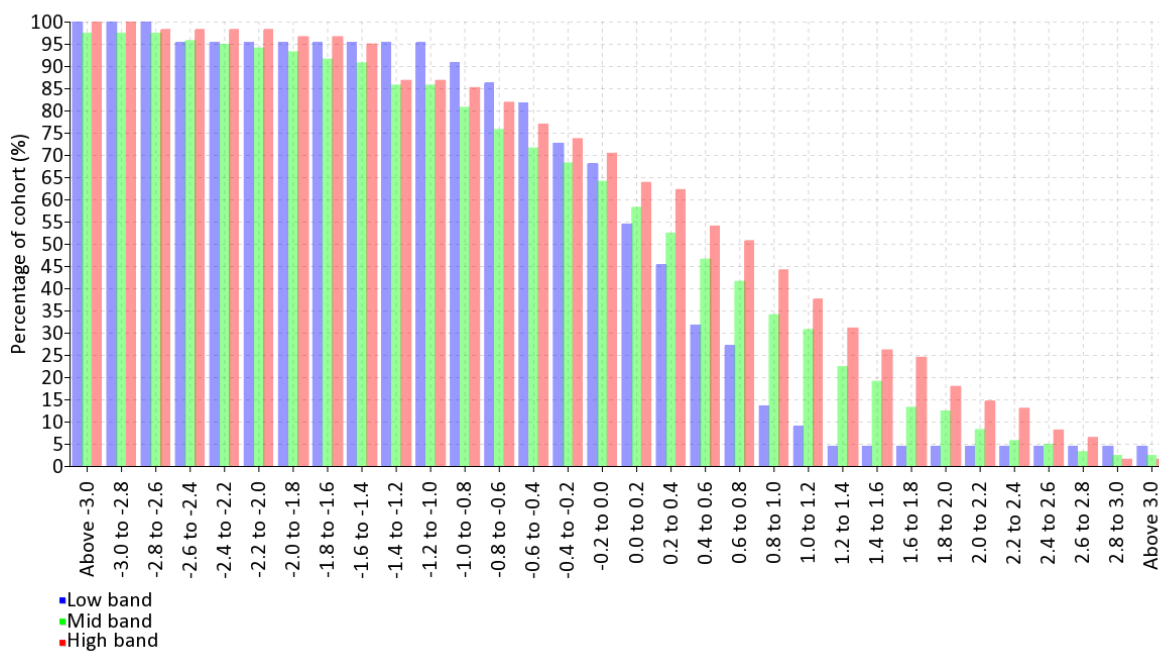
Gender



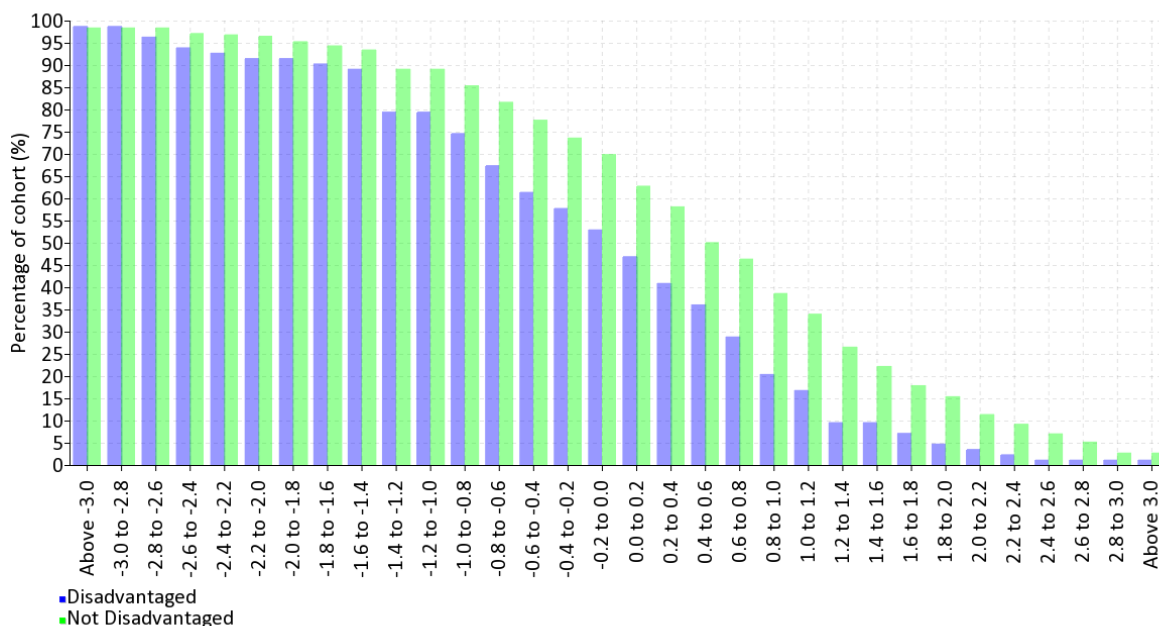
P8 Indicator Distribution

2019-20 - Aut2 - Yr11

Key Stage 2 Band



Disadvantaged



English Baccalaureate Subjects

2019-20 - Aut2 - Yr11

	Cohort	English %	Maths %	English & Maths %	Humanities %	Language %	Science %	E Bacc %
All	223	65.92 (147)	52.47 (117)	48.43 (108)	32.74 (73)	19.28 (43)	39.01 (87)	9.42 (21)
Male	133	60.90 (81)	53.38 (71)	47.37 (63)	28.57 (38)	11.28 (15)	36.84 (49)	6.02 (8)
Female	90	73.33 (66)	51.11 (46)	50.00 (45)	38.89 (35)	31.11 (28)	42.22 (38)	14.44 (13)
Free School Meals	36	47.22 (17)	30.56 (11)	25.00 (9)	8.33 (3)	0.00 (0)	13.89 (5)	0.00 (0)
Not Free School Meals	187	69.52 (130)	56.68 (106)	52.94 (99)	37.43 (70)	22.99 (43)	43.85 (82)	11.23 (21)
Disadvantaged	83	54.22 (45)	36.14 (30)	30.12 (25)	16.87 (14)	7.23 (6)	21.69 (18)	2.41 (2)
Disadvantaged Male	56	50.00 (28)	37.50 (21)	30.36 (17)	10.71 (6)	3.57 (2)	17.86 (10)	1.79 (1)
Disadvantaged Female	27	62.96 (17)	33.33 (9)	29.63 (8)	29.63 (8)	14.81 (4)	29.63 (8)	3.70 (1)
Not Disadvantaged	140	72.86 (102)	62.14 (87)	59.29 (83)	42.14 (59)	26.43 (37)	49.29 (69)	13.57 (19)
Not Disadvantaged Male	77	68.83 (53)	64.94 (50)	59.74 (46)	41.56 (32)	16.88 (13)	50.65 (39)	9.09 (7)
Not Disadvantaged Female	63	77.78 (49)	58.73 (37)	58.73 (37)	42.86 (27)	38.10 (24)	47.62 (30)	19.05 (12)
SEN K	27	40.74 (11)	29.63 (8)	25.93 (7)	18.52 (5)	0.00 (0)	22.22 (6)	0.00 (0)
SEN E	9	22.22 (2)	11.11 (1)	11.11 (1)	11.11 (1)	0.00 (0)	0.00 (0)	0.00 (0)
Looked After Children	2	50.00 (1)	0.00 (0)	0.00 (0)	0.00 (0)	0.00 (0)	0.00 (0)	0.00 (0)
Key Stage 2 Low	22	18.18 (4)	4.55 (1)	0.00 (0)	4.55 (1)	0.00 (0)	0.00 (0)	0.00 (0)
Key Stage 2 Low Male	13	7.69 (1)	7.69 (1)	0.00 (0)	0.00 (0)	0.00 (0)	0.00 (0)	0.00 (0)
Key Stage 2 Low Female	9	33.33 (3)	0.00 (0)	0.00 (0)	11.11 (1)	0.00 (0)	0.00 (0)	0.00 (0)
Key Stage 2 Middle	120	60.83 (73)	45.00 (54)	40.00 (48)	24.17 (29)	9.17 (11)	25.83 (31)	2.50 (3)
Key Stage 2 Middle Male	74	55.41 (41)	47.30 (35)	39.19 (29)	21.62 (16)	4.05 (3)	25.68 (19)	1.35 (1)
Key Stage 2 Middle Female	46	69.57 (32)	41.30 (19)	41.30 (19)	28.26 (13)	17.39 (8)	26.09 (12)	4.35 (2)
Key Stage 2 High	61	93.44 (57)	85.25 (52)	83.61 (51)	60.66 (37)	40.98 (25)	75.41 (46)	26.23 (16)
Key Stage 2 High Male	34	97.06 (33)	88.24 (30)	88.24 (30)	55.88 (19)	26.47 (9)	73.53 (25)	17.65 (6)
Key Stage 2 High Female	27	88.89 (24)	81.48 (22)	77.78 (21)	66.67 (18)	59.26 (16)	77.78 (21)	37.04 (10)

Grade 5 or higher

Key Students - P8 Indicator

2019-20 - Aut2 - Yr11

All Students

Lowest		Highest	
KHAIREH Troy (4.6) (M)	-3.66	EASTLEY Amy (4.8) (F)	3.98
KELLY-SALAZAR Pavel (4.6) (M)	-3.66	JENKINS Shauntel (4.7) (F)	3.81
KAKOU Jamal (4.4) (M)	-3.58	JAMA Naser (5.0) (M)	3.73
INOMA Jonathan (5.1) (M)	-2.81	HUTCHINSON Thomas (4.6) (M)	3.22
JURKOVIC Sohan (3.9) (M)	-2.80	ANDZI-QUAINOO Chiara (3.5) (F)	3.01
BROWN Rifan (4.9) (M)	-2.65	JAMA Leo (5.3) (M)	2.69
FRANCIS Ruby (4.3) (F)	-2.62	CLAYDEN-CASTELLI Claire (5.0) (F)	2.68
BOND Olisaebuka (4.8) (M)	-2.43	LAZAR Britney (4.2) (F)	2.61
DYER Nathan (4.8) (M)	-2.33	LEPPANEN Alyssa (5.1) (F)	2.60
ADESANYA Daniel (4.4) (M)	-2.10	PHAM Ifeoluwa (5.3) (F)	2.59

Male

Lowest		Highest	
KELLY-SALAZAR Pavel (4.6) (M)	-3.66	JAMA Naser (5.0) (M)	3.73
KHAIREH Troy (4.6) (M)	-3.66	HUTCHINSON Thomas (4.6) (M)	3.22
KAKOU Jamal (4.4) (M)	-3.58	JAMA Leo (5.3) (M)	2.69
INOMA Jonathan (5.1) (M)	-2.81	GURUNG Mucad (4.9) (M)	2.55
JURKOVIC Sohan (3.9) (M)	-2.80	BAKER Atirola (5.0) (M)	2.48
BROWN Rifan (4.9) (M)	-2.65	JAMES Arif (5.4) (M)	2.24
BOND Olisaebuka (4.8) (M)	-2.43	CHESHIRE-MILES Yul (4.5) (M)	2.23
DYER Nathan (4.8) (M)	-2.33	GENGA Harry (4.5) (M)	2.03
ADESANYA Daniel (4.4) (M)	-2.10	GALVIS Zephaniah (4.6) (M)	2.02
AJAYI Jamal (4.6) (M)	-1.68	HALSTEAD Dylan (5.0) (M)	1.98

Female

Lowest		Highest	
FRANCIS Ruby (4.3) (F)	-2.62	EASTLEY Amy (4.8) (F)	3.98
ROUBIANS Ifeoma (5.1) (F)	-2.01	JENKINS Shauntel (4.7) (F)	3.81
KIRKBY Serena (4.4) (F)	-2.00	ANDZI-QUAINOO Chiara (3.5) (F)	3.01
KAUR-DIGPAL Melanie (4.8) (F)	-1.93	CLAYDEN-CASTELLI Claire (5.0) (F)	2.68
HAWKINS Tia (5.3) (F)	-1.51	LAZAR Britney (4.2) (F)	2.61
SHEEHY Bruna (4.5) (F)	-1.17	LEPPANEN Alyssa (5.1) (F)	2.60
NGUYEN Oluwatosin (5.7) (F)	-1.13	PHAM Ifeoluwa (5.3) (F)	2.59
SULLIVAN Oliwia (3.6) (F)	-1.07	CRACKNELL-WRIGHT Deborah (5.3) (F)	2.39
DAWODU Isabella (4.5) (F)	-1.02	KENNETT-BROWN Alicia (5.4) (F)	2.34
BEGUM Jada (4.5) (F)	-0.97	CHOWDHURY Maddie (5.0) (F)	2.08

KS2 High

Lowest		Highest	
INOMA Jonathan (5.1) (M)	-2.81	JAMA Naser (5.0) (M)	3.73
ROUBIANS Ifeoma (5.1) (F)	-2.01	JAMA Leo (5.3) (M)	2.69
MAKINDE Jaden (5.0) (M)	-1.62	CLAYDEN-CASTELLI Claire (5.0) (F)	2.68
RIAZ Jonathan (5.4) (M)	-1.56	LEPPANEN Alyssa (5.1) (F)	2.60
BURTON Benete (5.5) (M)	-1.53	PHAM Ifeoluwa (5.3) (F)	2.59
HAWKINS Tia (5.3) (F)	-1.51	CRACKNELL-WRIGHT Deborah (5.3) (F)	2.39
CLARKE Rocco (5.6) (M)	-1.47	KENNETT-BROWN Alicia (5.4) (F)	2.34
RAVIO-PAUL Liviu (5.2) (M)	-1.44	JAMES Arif (5.4) (M)	2.24
NGUYEN Oluwatosin (5.7) (F)	-1.13	CHOWDHURY Maddie (5.0) (F)	2.08
FRANCIS Hoang (5.5) (M)	-0.93	HOPKINS Esteban (5.3) (M)	1.89

KS2 Mid

Lowest		Highest	
KELLY-SALAZAR Pavel (4.6) (M)	-3.66	EASTLEY Amy (4.8) (F)	3.98
KHAIREH Troy (4.6) (M)	-3.66	JENKINS Shauntel (4.7) (F)	3.81
KAKOU Jamal (4.4) (M)	-3.58	HUTCHINSON Thomas (4.6) (M)	3.22
BROWN Rifan (4.9) (M)	-2.65	LAZAR Britney (4.2) (F)	2.61
FRANCIS Ruby (4.3) (F)	-2.62	GURUNG Mucad (4.9) (M)	2.55
BOND Olisaebuka (4.8) (M)	-2.43	BAKER Atirola (5.0) (M)	2.48
DYER Nathan (4.8) (M)	-2.33	CHESHIRE-MILES Yul (4.5) (M)	2.23
ADESANYA Daniel (4.4) (M)	-2.10	HIRSI Xenia (4.6) (F)	2.07
KIRKBY Serena (4.4) (F)	-2.00	GENGA Harry (4.5) (M)	2.03
KAUR-DIGPAL Melanie (4.8) (F)	-1.93	GALVIS Zephaniah (4.6) (M)	2.02

KS2 Low

Lowest		Highest	
JURKOVIC Sohan (3.9) (M)	-2.80	ANDZI-QUAINOO Chiara (3.5) (F)	3.01
SULLIVAN Oliwia (3.6) (F)	-1.07	SERENLI Josie (3.6) (F)	1.13
BILLETT Caius (3.9) (M)	-1.00	JOSHUA Leon (2.5) (M)	0.85
FITZGERALD Shealtiel (3.7) (F)	-0.75	ASSAL Eden (3.2) (F)	0.76
JANES-HINTON Connor (3.5) (M)	-0.59	LUDHAR Rose (4.0) (F)	0.60
AMZOV Aaron (3.8) (M)	-0.44	FAJOBI Pharrell (4.0) (M)	0.60
LOK Princess (2.5) (F)	-0.25	KEITH-YOUNG Joshua (3.8) (M)	0.56
JONIAH Kulwant (2.5) (M)	-0.15	BAXTER Rachael (2.0) (F)	0.38
FRAZER Chinedu (3.9) (M)	0.00	PHIDD-HOSKINS Breanna (2.8) (F)	0.37
GOODISON Miracle (3.9) (M)	0.00	BURR Owen (3.5) (M)	0.21

Key Students - Attainment 8

2019-20 - Aut2 - Yr11

All Students

Lowest		Highest	
KELLY-SALAZAR Pavel (4.6) (M)	0.00	JAMA Naser (5.0) (M)	86.50
KAKOU Jamal (4.4) (M)	0.00	IFILL Robbie (5.7) (M)	85.00
KHAIREH Troy (4.6) (M)	0.00	JAMA Leo (5.3) (M)	85.00
JURKOVIC Sohan (3.9) (M)	1.00	KENNETT-BROWN Alicia (5.4) (F)	85.00
FRANCIS Ruby (4.3) (F)	8.00	JAMES Arif (5.4) (M)	84.00
MIRONE Humayra (F)	12.00	PHAM Ifeoluwa (5.3) (F)	84.00
ADESANYA Daniel (4.4) (M)	15.00	AIYESIMOJU Georgia (5.7) (F)	84.00
SULLIVAN Oliwia (3.6) (F)	15.00	EASTLEY Amy (4.8) (F)	84.00
LOK Princess (2.5) (F)	15.00	CRACKNELL-WRIGHT Deborah (5.3) (F)	82.00
JONSIAS Kulwant (2.5) (M)	16.00	DUNN Sasha-Lavina (5.4) (F)	80.00

Male

Lowest		Highest	
KHAIREH Troy (4.6) (M)	0.00	JAMA Naser (5.0) (M)	86.50
KELLY-SALAZAR Pavel (4.6) (M)	0.00	IFILL Robbie (5.7) (M)	85.00
KAKOU Jamal (4.4) (M)	0.00	JAMA Leo (5.3) (M)	85.00
JURKOVIC Sohan (3.9) (M)	1.00	JAMES Arif (5.4) (M)	84.00
ADESANYA Daniel (4.4) (M)	15.00	HOPKINS Esteban (5.3) (M)	77.00
JONSIAS Kulwant (2.5) (M)	16.00	JACK Noah (5.6) (M)	76.00
ABIDEN David (4.2) (M)	18.00	BAKER Atirola (5.0) (M)	74.00
JONES Liandro (2.5) (M)	18.00	GURUNG Mucad (4.9) (M)	72.00
BAPTISTE Ethan (M)	18.00	HUTCHINSON Thomas (4.6) (M)	72.00
BILLETT Caius (3.9) (M)	19.00	HODGE Kyle (5.7) (M)	70.00

Female

Lowest		Highest	
FRANCIS Ruby (4.3) (F)	8.00	KENNETT-BROWN Alicia (5.4) (F)	85.00
MIRONE Humayra (F)	12.00	EASTLEY Amy (4.8) (F)	84.00
LOK Princess (2.5) (F)	15.00	AIYESIMOJU Georgia (5.7) (F)	84.00
SULLIVAN Oliwia (3.6) (F)	15.00	PHAM Ifeoluwa (5.3) (F)	84.00
KIRKBY Serena (4.4) (F)	16.00	CRACKNELL-WRIGHT Deborah (5.3) (F)	82.00
FITZGERALD Shealtiel (3.7) (F)	19.00	DUNN Sasha-Lavina (5.4) (F)	80.00
BAXTER Rachael (2.0) (F)	21.00	JENKINS Shauntel (4.7) (F)	80.00
PHIDD-HOSKINS Breanna (2.8) (F)	22.00	LEPPANEN Alyssa (5.1) (F)	78.00
ASANTE Alexis (4.1) (F)	23.00	CLAYDEN-CASTELLI Claire (5.0) (F)	76.00
SMITH Leah (4.1) (F)	23.00	BOUGHIAS-VELASCO Oluwanifemi (5.3) (F)	75.00

KS2 High

Lowest		Highest	
INOMA Jonathan (5.1) (M)	24.00	JAMA Naser (5.0) (M)	86.50
ROUBIANS Ifeoma (5.1) (F)	32.00	JAMA Leo (5.3) (M)	85.00
MAKINDE Jaden (5.0) (M)	33.00	IFILL Robbie (5.7) (M)	85.00
RAIVIO-PAUL Liviu (5.2) (M)	40.50	KENNETT-BROWN Alicia (5.4) (F)	85.00
HAWKINS Tia (5.3) (F)	43.00	AIYESIMOJU Georgia (5.7) (F)	84.00
MOHAMMED Tristan (5.1) (M)	44.00	JAMES Arif (5.4) (M)	84.00
BAKUVA Mia (5.1) (F)	45.00	PHAM Ifeoluwa (5.3) (F)	84.00
RIAZ Jonathan (5.4) (M)	46.00	CRACKNELL-WRIGHT Deborah (5.3) (F)	82.00
SIVANESAN Shanon (5.2) (M)	47.00	DUNN Sasha-Lavina (5.4) (F)	80.00
BOUGHIAS Bali (5.1) (M)	47.50	LEPPANEN Alyssa (5.1) (F)	78.00

KS2 Mid

Lowest		Highest	
KELLY-SALAZAR Pavel (4.6) (M)	0.00	EASTLEY Amy (4.8) (F)	84.00
KAKOU Jamal (4.4) (M)	0.00	JENKINS Shauntel (4.7) (F)	80.00
KHAIREH Troy (4.6) (M)	0.00	BAKER Atirola (5.0) (M)	74.00
FRANCIS Ruby (4.3) (F)	8.00	HUTCHINSON Thomas (4.6) (M)	72.00
ADESANYA Daniel (4.4) (M)	15.00	GURUNG Mucad (4.9) (M)	72.00
KIRKBY Serena (4.4) (F)	16.00	HALSTEAD Dylan (5.0) (M)	69.00
ABIDEN David (4.2) (M)	18.00	BUSHI Martha (5.0) (F)	67.00
BROWN Rifan (4.9) (M)	20.00	GAGBE Edvinas (4.9) (M)	62.00
BOND Olisaebuka (4.8) (M)	20.00	BIRKETT Wojciech (4.9) (M)	62.00
DYER Nathan (4.8) (M)	21.00	COPIER Joseph (4.9) (M)	61.00

KS2 Low

Lowest		Highest	
JURKOVIC Sohan (3.9) (M)	1.00	ANDZI-QUAINOO Chiara (3.5) (F)	55.00
SULLIVAN Oliwia (3.6) (F)	15.00	SERENLI Josie (3.6) (F)	37.00
LOK Princess (2.5) (F)	15.00	FAJOBI Pharrell (4.0) (M)	36.00
JONIAH Kulwant (2.5) (M)	16.00	LUDHAR Rose (4.0) (F)	36.00
JONES Liandro (2.5) (M)	18.00	KEITH-YOUNG Joshua (3.8) (M)	33.00
JANES-HINTON Connor (3.5) (M)	19.00	ASSAL Eden (3.2) (F)	30.00
FITZGERALD Shealtiel (3.7) (F)	19.00	GOODISON Miracle (3.9) (M)	29.00
BILLETT Caius (3.9) (M)	19.00	CHIME Luke (3.8) (M)	29.00
BAXTER Rachael (2.0) (F)	21.00	FRAZER Chinedu (3.9) (M)	29.00
PHIDD-HOSKINS Breanna (2.8) (F)	22.00	BURR Owen (3.5) (M)	27.00

Key Students - EBACC APS

2019-20 - Aut2 - Yr11

All Students

Lowest		Highest	
KELLY-SALAZAR Pavel (4.6) (M)	0.00	JAMA Naser (5.0) (M)	86.50
KHAIREH Troy (4.6) (M)	0.00	IFILL Robbie (5.7) (M)	85.00
KAKOU Jamal (4.4) (M)	0.00	JAMA Leo (5.3) (M)	85.00
JURKOVIC Sohan (3.9) (M)	0.17	KENNETT-BROWN Alicia (5.4) (F)	85.00
LOK Princess (2.5) (F)	0.67	JAMES Arif (5.4) (M)	84.00
KIRKBY Serena (4.4) (F)	0.83	PHAM Ifeoluwa (5.3) (F)	84.00
JONES Liandro (2.5) (M)	0.83	AIYESIMOJU Georgia (5.7) (F)	84.00
FRANCIS Ruby (4.3) (F)	0.83	EASTLEY Amy (4.8) (F)	84.00
MIRONE Humayra (F)	1.00	CRACKNELL-WRIGHT Deborah (5.3) (F)	82.00
SULLIVAN Oliwia (3.6) (F)	1.00	DUNN Sasha-Lavina (5.4) (F)	80.00

Male

Lowest		Highest	
KHAIREH Troy (4.6) (M)	0.00	JAMA Naser (5.0) (M)	86.50
KELLY-SALAZAR Pavel (4.6) (M)	0.00	IFILL Robbie (5.7) (M)	85.00
KAKOU Jamal (4.4) (M)	0.00	JAMA Leo (5.3) (M)	85.00
JURKOVIC Sohan (3.9) (M)	0.17	JAMES Arif (5.4) (M)	84.00
JONES Liandro (2.5) (M)	0.83	HOPKINS Esteban (5.3) (M)	77.00
BAPTISTE Ethan (M)	1.00	JACK Noah (5.6) (M)	76.00
JANES-HINTON Connor (3.5) (M)	1.17	BAKER Atirola (5.0) (M)	74.00
PAIS Adil (4.4) (M)	1.17	GURUNG Mucad (4.9) (M)	72.00
DYER Nathan (4.8) (M)	1.33	HUTCHINSON Thomas (4.6) (M)	72.00
LIMA Nikolay (M)	1.33	HODGE Kyle (5.7) (M)	70.00

Female

Lowest		Highest	
LOK Princess (2.5) (F)	0.67	KENNETT-BROWN Alicia (5.4) (F)	85.00
FRANCIS Ruby (4.3) (F)	0.83	EASTLEY Amy (4.8) (F)	84.00
KIRKBY Serena (4.4) (F)	0.83	AIYESIMOJU Georgia (5.7) (F)	84.00
MIRONE Humayra (F)	1.00	PHAM Ifeoluwa (5.3) (F)	84.00
SULLIVAN Oliwia (3.6) (F)	1.00	CRACKNELL-WRIGHT Deborah (5.3) (F)	82.00
FITZGERALD Shealtiel (3.7) (F)	1.17	DUNN Sasha-Lavina (5.4) (F)	80.00
BAXTER Rachael (2.0) (F)	1.17	JENKINS Shauntel (4.7) (F)	80.00
PHIDD-HOSKINS Breanna (2.8) (F)	1.33	LEPPANEN Alyssa (5.1) (F)	78.00
SMITH Leah (4.1) (F)	1.50	CLAYDEN-CASTELLI Claire (5.0) (F)	76.00
HEALY Marvia (4.2) (F)	1.67	BOUGHIAS-VELASCO Oluwanifemi (5.3) (F)	75.00

KS2 High

Lowest		Highest	
INOMA Jonathan (5.1) (M)	2.00	JAMA Naser (5.0) (M)	86.50
MAKINDE Jaden (5.0) (M)	2.67	JAMA Leo (5.3) (M)	85.00
ROUBIANS Ifeoma (5.1) (F)	3.17	IFILL Robbie (5.7) (M)	85.00
CLARKE Rocco (5.6) (M)	3.83	KENNETT-BROWN Alicia (5.4) (F)	85.00
RAIVIO-PAUL Liviu (5.2) (M)	3.83	AIYESIMOJU Georgia (5.7) (F)	84.00
RIAZ Jonathan (5.4) (M)	4.00	JAMES Arif (5.4) (M)	84.00
MOHAMMED Tristan (5.1) (M)	4.00	PHAM Ifeoluwa (5.3) (F)	84.00
SIVANESAN Shanon (5.2) (M)	4.17	CRACKNELL-WRIGHT Deborah (5.3) (F)	82.00
HURST Jada (5.0) (F)	4.17	DUNN Sasha-Lavina (5.4) (F)	80.00
HAWKINS Tia (5.3) (F)	4.17	LEPPANEN Alyssa (5.1) (F)	78.00

KS2 Mid

Lowest		Highest	
KAKOU Jamal (4.4) (M)	0.00	EASTLEY Amy (4.8) (F)	84.00
KELLY-SALAZAR Pavel (4.6) (M)	0.00	JENKINS Shauntel (4.7) (F)	80.00
KHAIREH Troy (4.6) (M)	0.00	BAKER Atirola (5.0) (M)	74.00
KIRKBY Serena (4.4) (F)	0.83	HUTCHINSON Thomas (4.6) (M)	72.00
FRANCIS Ruby (4.3) (F)	0.83	GURUNG Mucad (4.9) (M)	72.00
PAIS Adil (4.4) (M)	1.17	HALSTEAD Dylan (5.0) (M)	69.00
BROWN Rifan (4.9) (M)	1.33	BUSHI Martha (5.0) (F)	67.00
DYER Nathan (4.8) (M)	1.33	GAGBE Edvinas (4.9) (M)	62.00
ADESANYA Daniel (4.4) (M)	1.50	BIRKETT Wojciech (4.9) (M)	62.00
SMITH Leah (4.1) (F)	1.50	COPIER Joseph (4.9) (M)	61.00

KS2 Low

Lowest		Highest	
JURKOVIC Sohan (3.9) (M)	0.17	ANDZI-QUAINOO Chiara (3.5) (F)	55.00
LOK Princess (2.5) (F)	0.67	SERENLI Josie (3.6) (F)	37.00
JONES Liandro (2.5) (M)	0.83	FAJOBI Pharrell (4.0) (M)	36.00
SULLIVAN Oliwia (3.6) (F)	1.00	LUDHAR Rose (4.0) (F)	36.00
JANES-HINTON Connor (3.5) (M)	1.17	KEITH-YOUNG Joshua (3.8) (M)	33.00
FITZGERALD Shealtiel (3.7) (F)	1.17	ASSAL Eden (3.2) (F)	30.00
BAXTER Rachael (2.0) (F)	1.17	GOODISON Miracle (3.9) (M)	29.00
PHIDD-HOSKINS Breanna (2.8) (F)	1.33	CHIME Luke (3.8) (M)	29.00
JONIAH Kulwant (2.5) (M)	1.33	FRAZER Chinedu (3.9) (M)	29.00
BILLETTS Caius (3.9) (M)	1.33	BURR Owen (3.5) (M)	27.00

Compass Reports
www.compassreports.co.uk

